

Methyl 4-chlorobenzoate

7.96

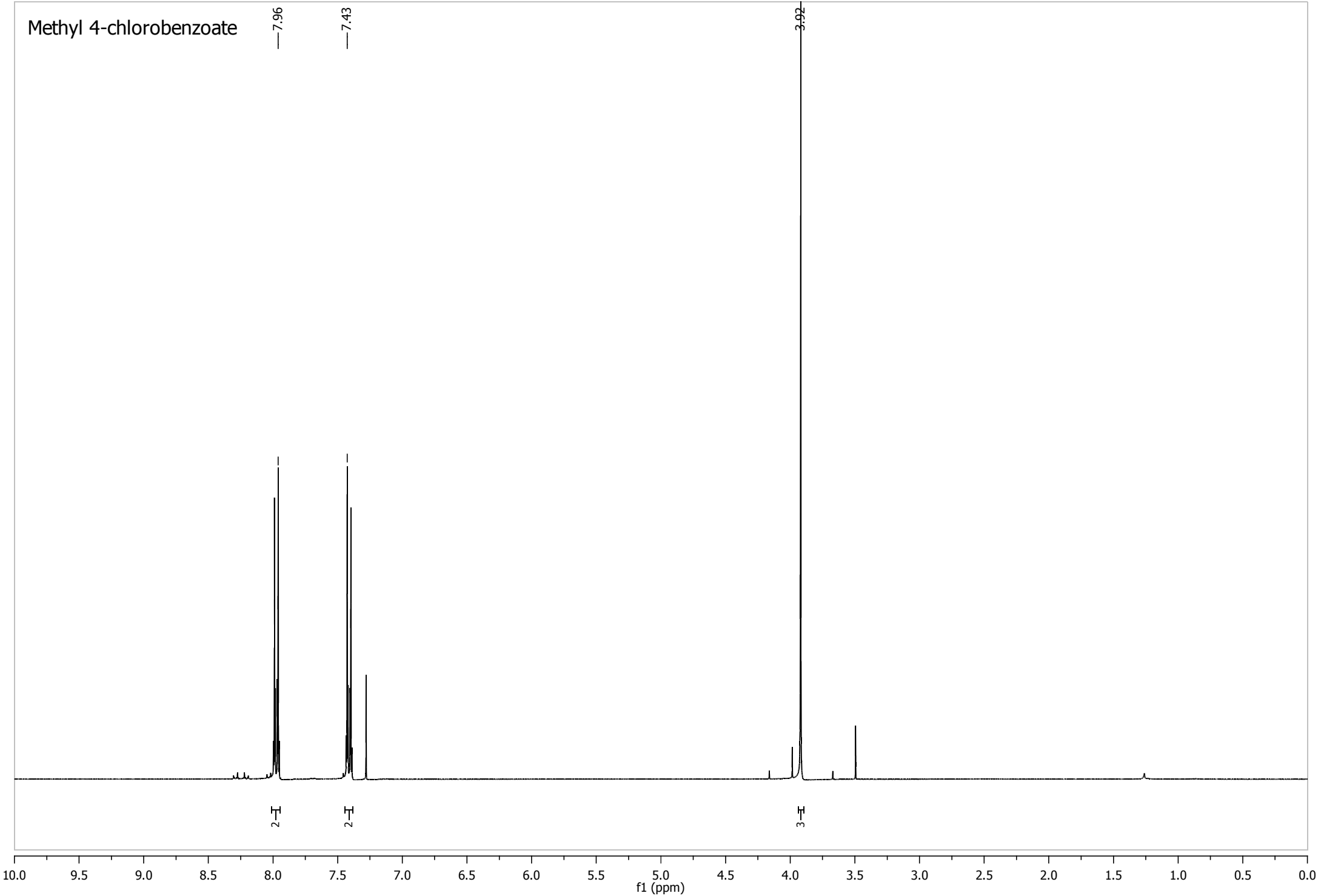
7.43

3.92

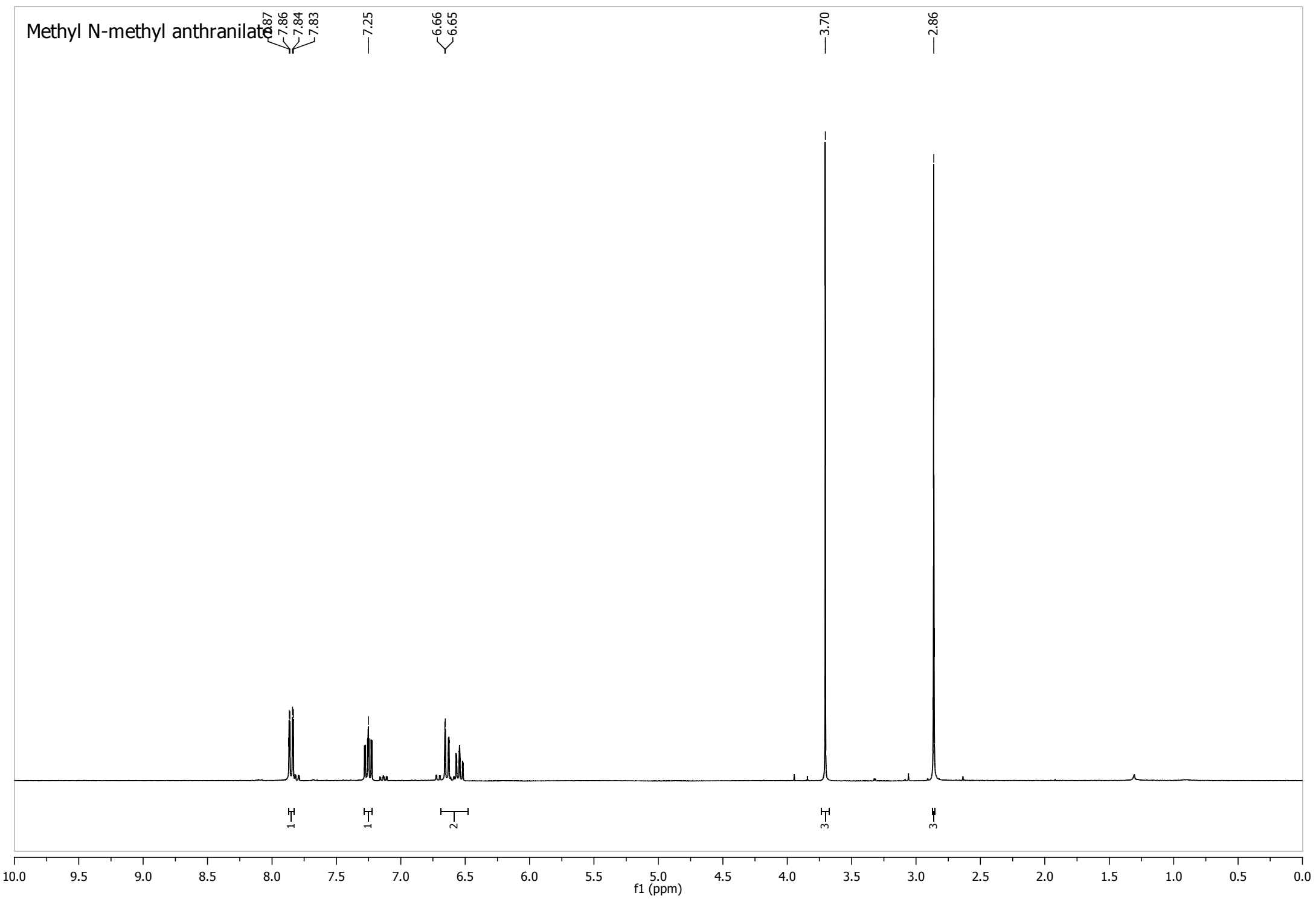
2H

2H

3H



Methyl N-methyl anthranilate



Methyl phenylacetate

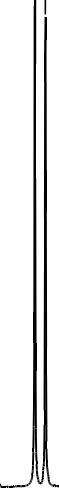
7.35
7.35

3.73
3.68

5

3
2

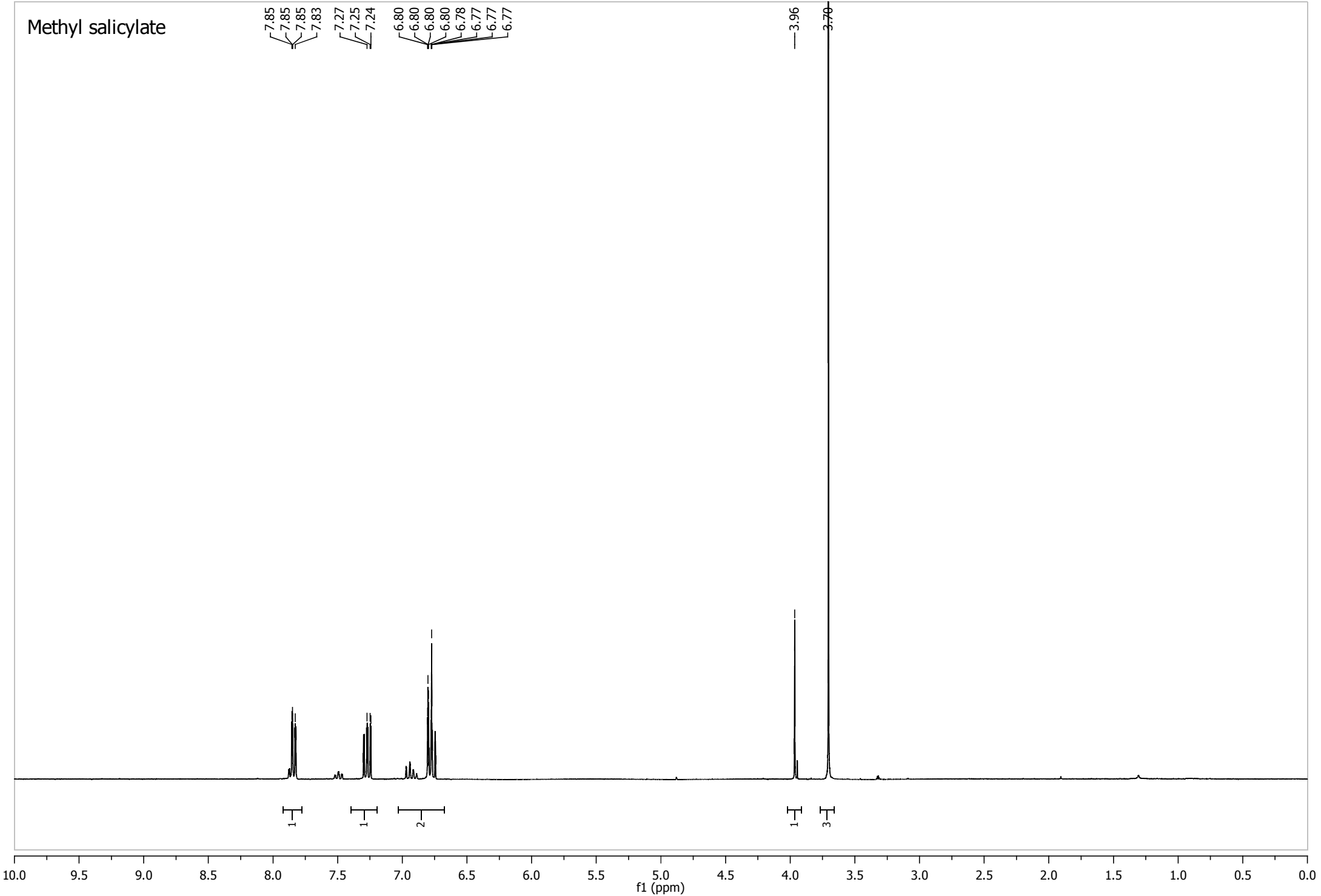
10.0 9.5 9.0 8.5 8.0 7.5 7.0 6.5 6.0 5.5 5.0 4.5 4.0 3.5 3.0 2.5 2.0 1.5 1.0 0.5 0.0
f1 (ppm)



Methyl salicylate

7.85
7.85
7.85
7.83
7.27
7.25
7.24
6.80
6.80
6.80
6.78
6.77
6.77

3.96
3.70



Methyl trans-cinnamate

