

Student ID \_\_\_\_\_

Name \_\_\_\_\_

Recitation Date/Time \_\_\_\_\_ TA Name \_\_\_\_\_

page points:

2 \_\_\_\_\_ (24)

3 \_\_\_\_\_ (26)

4 \_\_\_\_\_ (24)

5 \_\_\_\_\_ (16)

6 \_\_\_\_\_ (10)

Total \_\_\_\_\_ (100)

## Periodic Table

H																	He
Li	Be											B	C	N	O	F	Ne
Na	Mg											Al	Si	P	S	Cl	Ar
K	Ca	Sc	Ti	V	Cr	Mn	Fe	Co	Ni	Cu	Zn	Ga	Ge	As	Se	Br	Kr
Rb	Sr	Y	Zr	Nb	Mo	Tc	Ru	Rh	Pd	Ag	Cd	In	Sn	Sb	Te	I	Xe
Cs	Ba	La	Ha	Ta	W	Re	Os	Ir	Pt	Au	Hg	Tl	Pb	Bi	Po	At	Rn
Fr	Ra	Ac															

**Please sit with an empty seat between you and your neighbors.**

**Please silence your cell phones and keep them in your bags during exam.**

**You may use molecular models. Please bring them in transparent bags.**

**Feel free to ask questions about the questions, but please don't ask questions about your answers, it distracts your neighbors.**

1. Provide the structure for each of the following compounds (4 pts each)

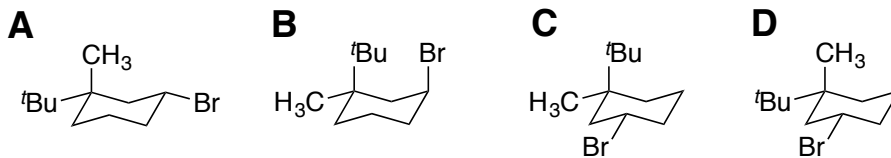
a) (R)-3-fluoro-2,3-dimethylhexane

b) (1R,2S,3R)-1-butyl-2-chloro-3-methylcyclohexane

c) (Z,R)-5-bromo-3-methyl-3-heptene

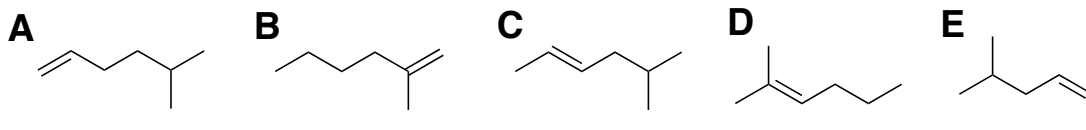
2. Identify the most and least stable species in each of following series (3 pts each)

a)



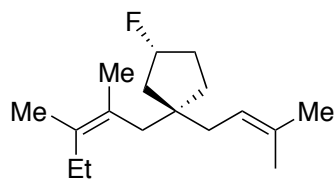
Most stable: \_\_\_\_\_; Least stable: \_\_\_\_\_.

b)

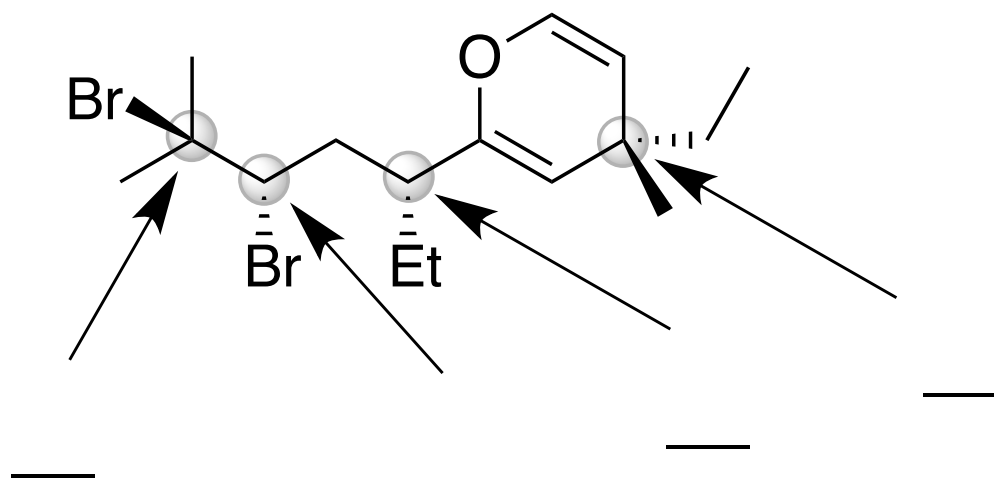


Most stable: \_\_\_\_\_; Least stable: \_\_\_\_\_.

3. Draw all 7 stereoisomers of the following molecule (2 pts each);

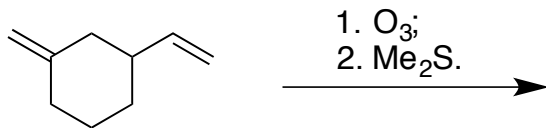


4. Assign the stereochemistry of each highlighted carbon using **R**, **S**, or **Neither** (3 pts each).

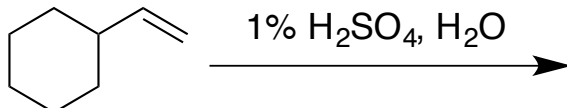


5. Provide the major product(s) for each of the following reactions (stereochemistry **not** required, 4 pts each)

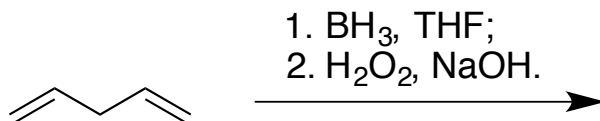
a)



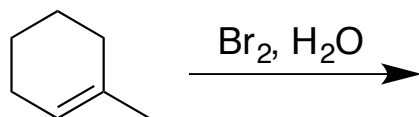
b)



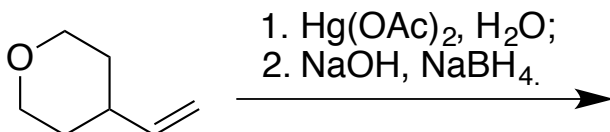
c)



d)



e)



6. Select the best reaction condition for each of the following transformations (4 pts each)

**A:** HBr

**C:**  $\text{BH}_3$ ; then  $\text{NaBH}_4$

**E:**  $\text{Hg}(\text{OAc})_2$ ,  $\text{H}_2\text{O}$ ; then NaOH,  $\text{NaBH}_4$

**G:**  $\text{Br}_2$ ,  $\text{H}_2\text{O}$

**I:**  $\text{Br}_2$

**B:** HBr,  $\text{H}_2\text{O}$

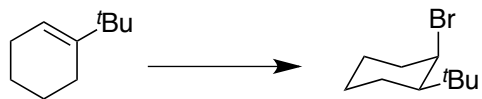
**D:**  $\text{O}_3$ ; then  $\text{H}_2\text{O}_2$

**F:**  $\text{BH}_3$ ; then  $\text{H}_2\text{O}_2$ , NaOH

**H:**  $\text{Br}_2$ , MeOH

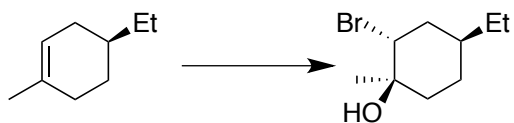
**J:** HBr, peroxide, heat

a)



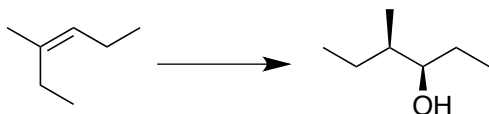
Best condition: \_\_\_\_\_

b)



Best condition: \_\_\_\_\_

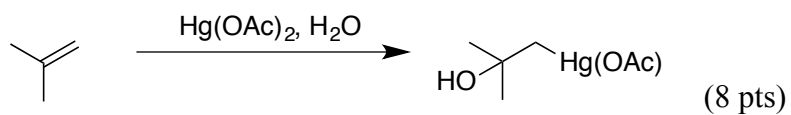
c)



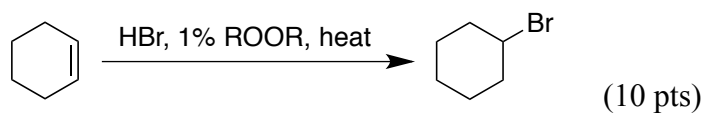
Best condition: \_\_\_\_\_

7. Use curved arrow or fishhook notation to draw the mechanism for each of the following reactions.

a)



b)



(Please do not detach this page from the others)

(Please do not detach this page from the others)